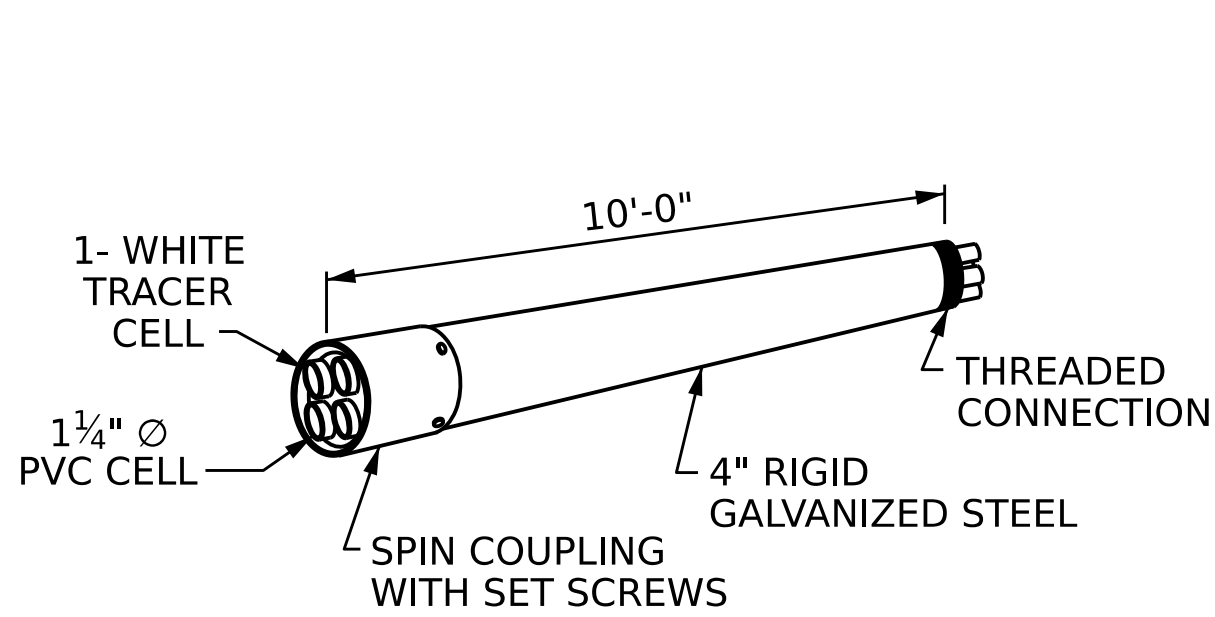
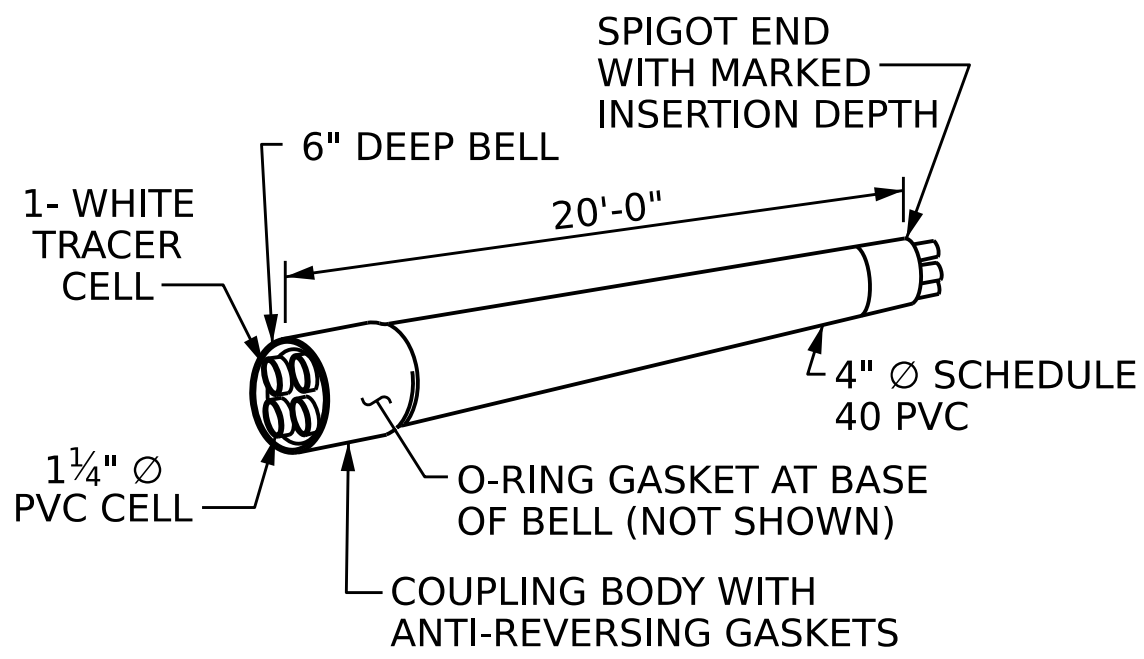


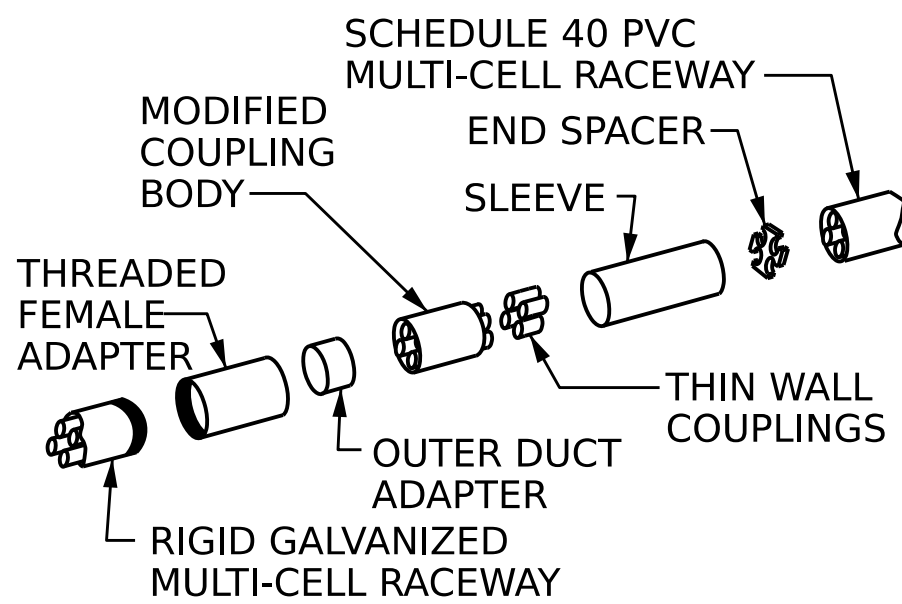
8/26/21



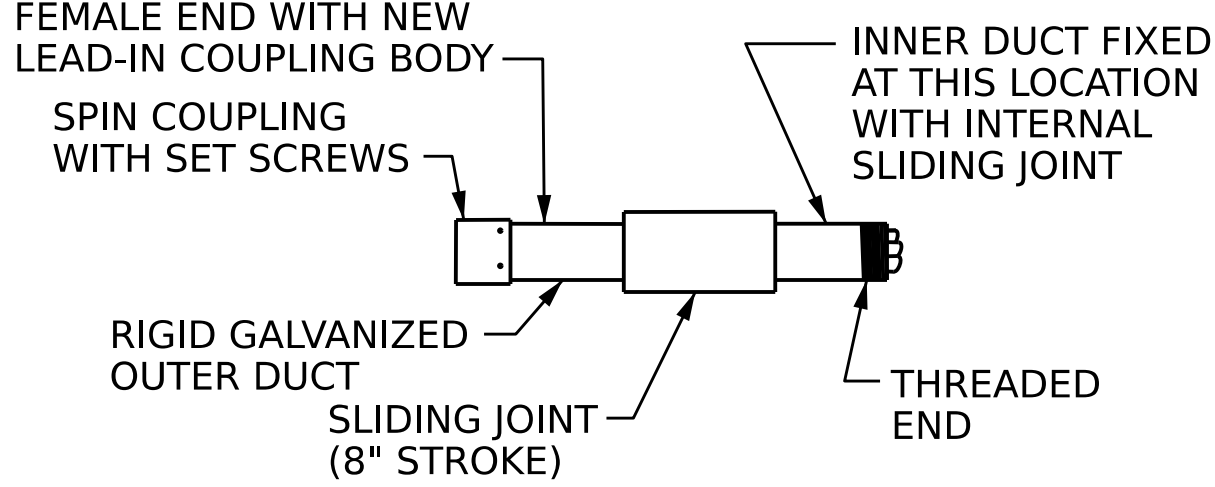
**RIGID GALVANIZED (RGC)  
MULTI-CELL RACEWAY**



**SCHEDULE 40 PVC  
MULTI-CELL RACEWAY**



**TRANSITION ADAPTER**



**EXPANSION JOINT FITTING**

**NOTES**

THE CONTRACTOR SHALL BE RESPONSIBLE FOR DETERMINING THE TOTAL QUANTITY OF CONDUIT NEEDED TO COMPLETE THE WORK AND THAT THE CONDUIT(S) ARE PLACED AT THE NOTED DIMENSION AND ABOVE THE BOTTOM OF THE GIRDER.

THE INSTALLATION OF THE CONDUIT SYSTEM SHALL BE PAID FOR AS LUMP SUM. THE PRICE SHALL INCLUDE ALL CONDUIT, HANGERS, STABILIZERS, EXPANSION JOINTS, CONCRETE INSERTS, PVC SLEEVES AND ALL NECESSARY HARDWARE TO COMPLETE THE WORK.

THE CONTRACTOR SHALL FIELD VERIFY THAT THE CONDUIT SYSTEM IS NOT IN CONFLICT WITH THE GUARDRAIL POSTS.

SEE DETAIL "C" FOR HANGER ASSEMBLY INSTALLATION.

INSTALL SLEEVES PARALLEL TO GIRDERS. SEE DETAIL "B" FOR SLEEVE INSTALLATION.

PROVIDE TRANSITION ADAPTOR (AND EXPANSION JOINT) FOR CONDUIT AT END BENT 1 (AND END BENT 2).

INSTALL STABILIZER'S MIDWAY BETWEEN DECK EXPANSION JOINTS.

STABILIZER CAN NOT BE USED INSTEAD OF A HANGER ASSEMBLY.

INSTALL EXPANSION JOINTS AT BENT #, BENT #, BENT #, AND BENT #. THE CONCRETE SCREW INSERT SHALL HAVE A ROD SIZE OF 5/8" AND A PULL FORCE OF 1260 lbs.

FOR ELECTRICAL CONDUIT SYSTEM FOR SIGNALS, SEE SPECIAL PROVISIONS.

**DETAIL "A"**

TERMINATION OF CONDUIT AT WING WALL

**DETAIL "B"**

PVC SLEEVE INSTALLATION & RGC/PVC ADAPTOR AT BACKWALL.

**DETAIL "C"**

HANGER ASSEMBLY

**CONDUIT LAYOUT**

**DETAIL "E"**

STABILIZER

PROJECT NO. \_\_\_\_\_

\_\_\_\_\_ COUNTY

STATION: \_\_\_\_\_

**DETAIL "F"**

DEFLECTION COUPLER

STATE OF NORTH CAROLINA  
DEPARTMENT OF TRANSPORTATION  
RALEIGH

STANDARD

**ELECTRICAL CONDUIT  
SYSTEM FOR SIGNALS**

REVISIONS						SHEET NO.
NO.	BY:	DATE:	NO.	BY:	DATE:	
1			3			TOTAL SHEETS
2			4			

DOCUMENT NOT CONSIDERED  
FINAL UNLESS ALL  
SIGNATURES COMPLETED

STD. ECS1

**ELECTRIC CONDUIT DETAILS**

ASSEMBLED BY:		DATE :	
CHECKED BY :		DATE :	
DRAWN BY :	RWW	4/03	REV. 5/1/06 TLA/GM
CHECKED BY :	DBM	4/03	REV. 10/1/11 MAA/GM
			REV. 12/17 MAA/THC